

# The Win Win Inn

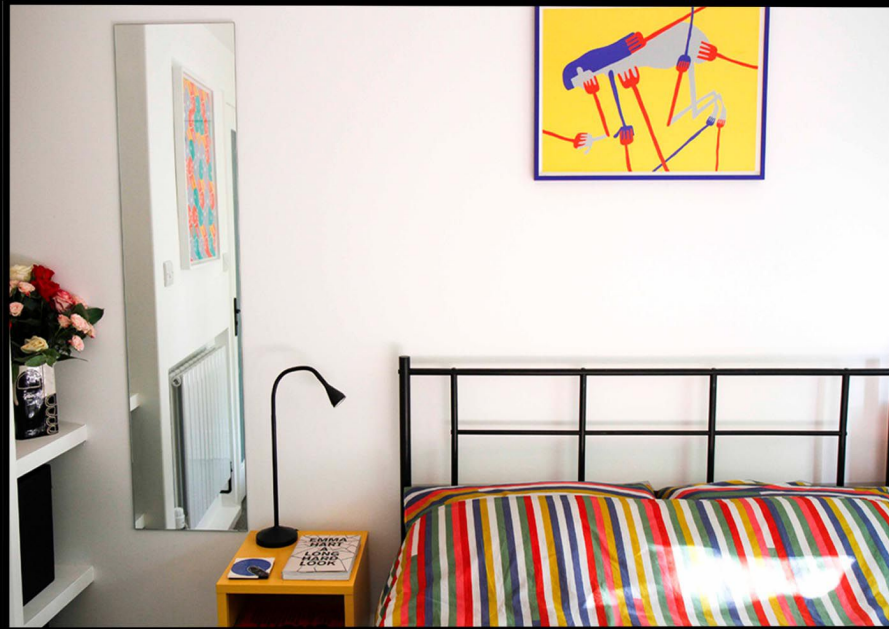
a place for art people to stay.



**Be my guest:**

**email: [thewinwininn@gmail.com](mailto:thewinwininn@gmail.com)**

**insta: [@the\\_win\\_win\\_inn](https://www.instagram.com/the_win_win_inn)**





## **THE WIN WIN INN**

**A place for art people to stay in London.**



**Private bright double room with own entrance and bathroom in South London. Hosted by artist Emma Hart who can help guests dive into London's art scene, or leave them to enjoy their own space.**



**Own entrance**



**Private bathroom**



**Access to a quiet garden**



**4 mins walk to transport links**



**20 min train ride to London Victoria, London Bridge**



**5 mins walk to a local pub with a delicious menu**



**Wifi, refreshments and welcome good vibes**



**Includes gallery memberships**



**Car parking space available**



**Get the scoop on private views + art events**



**Local tips or creative guidance**

**Kitchen facilities and washing machine available for longer stays.**

**Price negotiable depending on length of stay - get in touch .**

**email: [thewinwininn@gmail.com](mailto:thewinwininn@gmail.com)**

**insta: [@the\\_win\\_win\\_inn](https://www.instagram.com/the_win_win_inn)**

# REVIEWS

**"I was in London for the best part of a month and the room at the Win Win Inn was perfect for an extended stay away from home. The room is spacious and extremely comfortable, I stayed during December, and the room was cosy and warm. It is handily placed from the train station, a few minutes walk away. There are shops dotted along the main road and supermarkets just a 10 minute walk along the road too, it is really well placed for it all. Emma is a really generous and accommodating host. Thank you for a great stay."**

**Review from an artist who stayed at The Win Win Inn, December 2025.**

**"Emma's place is great. Amazing bathroom, comfy bed, and lovely decor, including Emma's own art. Clean, cozy, self-contained haven on a peaceful cul-de-sac, just minutes from the train station linking you to Central London. I was driving & had no trouble parking on the street outside. I can't recommend enough. I'd love to stay again, especially in the summer where I'm sure it'd be even more perfect (with its doors open to the outside space)."**

**Review from a guest who stayed at The Win Win Inn, November 2025.**

**Gorgeous spot. Really feels like own apartment, it has a separate entrance and own bathroom. Lovely quiet street in a green area of London, i enjoyed the food at the pub. Emma was super helpful and I used her Tate card to get in free to see an exhibition there. Travelling was easy - I was into central London in 20 minutes on the train and the station is very close by. This place is such a bargain, for pretty much my own place, I couldn't recommend it enough, I'll definitely be coming back when I visit London again.**

**Review from a guest who stayed at The Win Win Inn, October 2025.**

**"I had a lovely stay at Emma's. The room was great with a comfy bed and nice shower. The tea and coffee machine and fresh fruit were a nice touch too!**

**Emma was very helpful and then the own private entrance made the stay so much less awkward I could come and go privately. Transport links were very easy. I got to my meeting in centre of town via the train quickly. I'll definitely stay again."**

**Review from a guest who stayed at The Win Win Inn, September 2025.**